

USB Driver Installation for the C53 and CT6 Testing Machines

To use the USB interface on the C53 or CT6 testing machines you will need to install a driver. This creates a virtual COM port on the computer and allows the USB connection to be used in the same way as the RS232 connection, for example using HyperTerminal in Windows XP, or a program such as Tera Term (<http://tssh2.sourceforge.jp/>) or RealTerm (<http://sourceforge.net/projects/realterm>) in Windows 7.

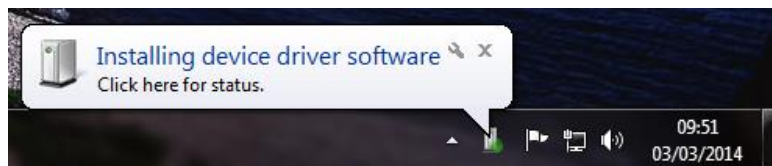
In practice the driver itself is already part of Windows; the file you need to download is simply an information file linking the C53 / CT6 to the Windows driver. This can be downloaded from www.engsys.co.uk. To install the driver follow the steps below.

IMPORTANT – DO NOT CONNECT THE TESTING MACHINE TO THE USB PORT ON THE COMPUTER UNTIL THE DRIVER HAS BEEN INSTALLED

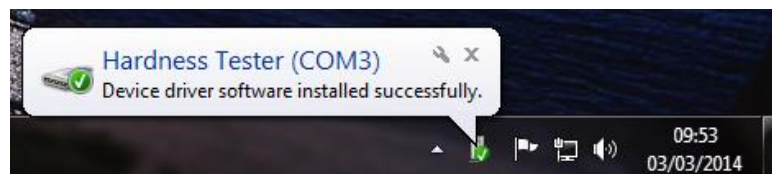
Installing the driver on Windows 7, 8.1 or 10:

Download & run the driver installation file. Follow the instructions on screen to install the driver information file.

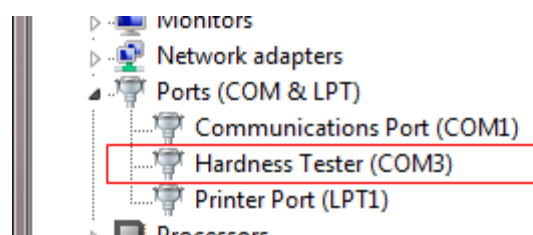
Connect the USB port on the C53 or CT6 to the computer. A message will appear indicating that the driver is being installed:



Depending on the computer's configuration, it may search Windows Update for a driver. This could take a couple of minutes; once the installation is complete another message should appear. Take note of the COM port number displayed:



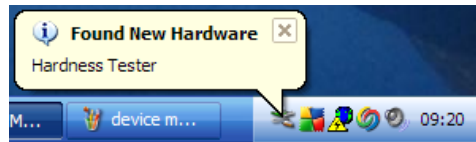
This virtual COM port will be present only when the C53 or CT6 is plugged in. If there is any doubt as to which port to use, open Device manager by right-clicking on 'Computer' and selecting 'Properties'. Click 'Device Manager' on the left-hand pane. Click the plus symbol next to 'Ports (COM & LPT)' to expand it. One of the ports listed will be 'Hardness Tester'. This will tell you which COM port to use:



Installing the driver on Windows XP:

Download & run the driver installation file. Follow the instructions on screen to install the driver information file.

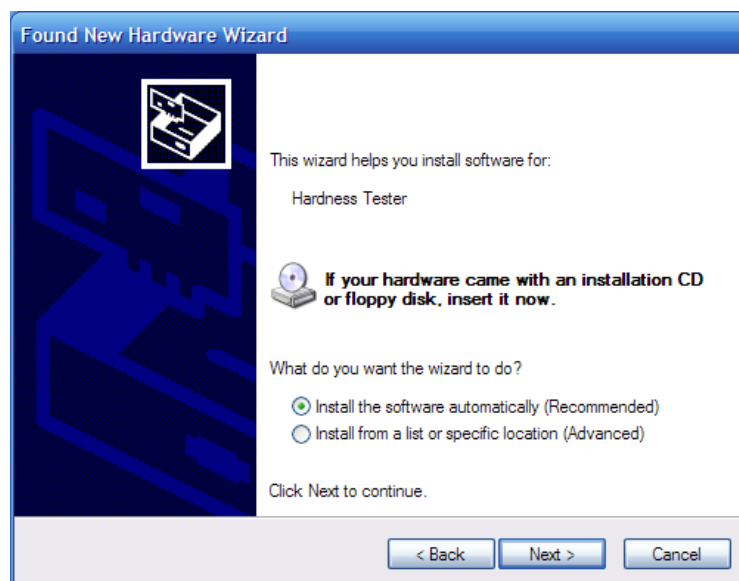
Connect the USB port on the C53 or CT6 to the computer. 'Found New Hardware' will be displayed:



Select 'No, not this time' when asked if Windows can connect to Windows Update, then click 'Next':



Check that 'Install the software automatically' is selected, then click 'Next' again:



A warning will appear showing that Microsoft has not approved the driver. Select 'Continue Anyway'. As mentioned previously the actual driver is part of Windows and is perfectly safe to install:



The wizard will then show that the installation is complete; click 'Finish'.

An extra COM port will have been created on the computer; this will be present only when the C53 or CT6 is plugged in. If there is any doubt as to which port to use, open Device manager by right-clicking on 'My Computer' and selecting 'Properties'. Click the 'Hardware' tab and then click 'Device Manager'. Click the plus symbol next to 'Ports (COM & LPT)' to expand it. One of the ports listed will be 'Hardness Tester'. This will tell you which COM port to use:

